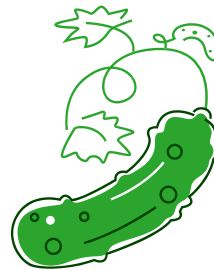




Space is limited. We are looking for families, couples or individuals who reside in apartments, townhomes, and mobile homes or do not have access to their own garden plot, to apply.



Want to **GROW** with us?

**23 TOTAL FAMILY PLOTS
AVAILABLE!**

**Three raised beds for seniors and
gardeners with disabilities.**

Peace Community Garden!

at Peace Lutheran Church



Community Garden Plots Available
No Fees (Sponsored by Allina and Thrivent)
Garden located at corner of 2nd St. & 5th Ave. SW
TO CLAIM A 10'x10' PLOT OR RAISED BED,
PLEASE EMAIL:
peacecommunitygarden@gmail.com



*Communities grow better
when we grow together!*